



Quick Starting Guide



INDEX

1	GETTING STARTED.....	PAGE 3
2	SETTINGS.....	PAGE 6
3	PROGRAMMING.....	PAGE 11
4	MEASURE.....	PAGE 15

This is *Nemo Quick Starting Guide*, for any other detailed information it is necessary to refer to the Software Manual officialy released and available also on the Marposs website.

1 GETTING STARTED

There are three Nemo versions with a different rear panel; one of them, with DigiCrown box connectors, it is designed for digital probe devices and Marposs DigiNet products (see FIGURE 1). The second one is designed for input devices using USB connections and Marposs EasyBox products (see FIGURE 2). The last one is designed for input devices using USB connections like Red Crown2 USB (see FIGURE 3).

						
FIGURE 1 	 MAX. 3 MODULES	 MAX. 8 DEVICES	 MAX. 2 DEVICES	 MAX. 2 DEVICES	 MAX. 2 DEVICES	
FIGURE 2 	No	 MAX. 8 DEVICES	 MAX. 2 DEVICES	 MAX. 2 DEVICES	 MAX. 2 DEVICES	
FIGURE 3 	No	 MAX. 8 DEVICES	 MAX. 8 DEVICES	 MAX. 8 DEVICES	 MAX. 2 DEVICES	

This chapter describes the operations sequence to connect all devices.



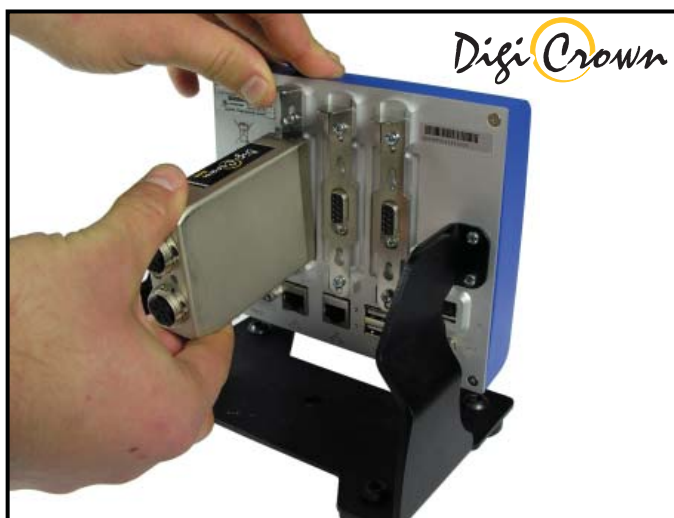
EasyBox using the USB port (see FIGURE 1).

FIGURE 1

Bluetooth® key dongle for wireless Marpos wave devices using the USB port (see FIGURE 2).



FIGURE 2



DigiCrown box making sure the box is locked in position by pushing the tab down (see FIGURE 3).

FIGURE 3

2

Insert the power cable into the connector and screw finger tight to secure (see FIGURE 4).



FIGURE 4

3

Turn on the NEMO (see FIGURE 5).



FIGURE 5

2 SETTINGS

This chapter describes the operations sequence to identify the input devices and to see which transducers are connected to Nemo.

1

From the Home page, tap on “SETTINGS” button (see FIGURE 1).

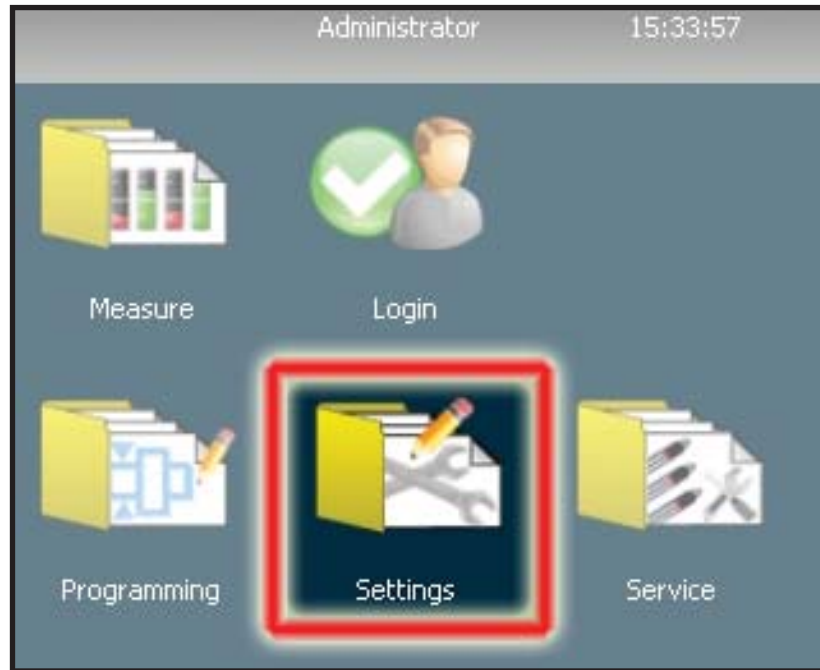


FIGURE 1

2

Tap on “HARDWARE SETTINGS” button (see FIGURE 2).

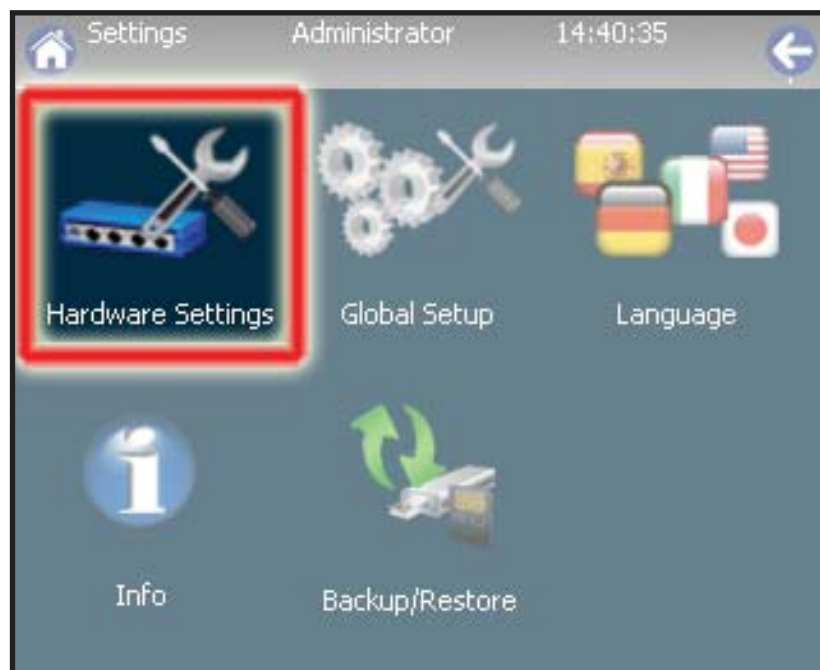


FIGURE 2

3

Tap on “MEASURE DEVICES” button (see FIGURE 3).



FIGURE 3

4

Tap on “UPDATE” button (see FIGURE 4).



FIGURE 4

5

Tap on “No” in the following window (see FIGURE 5).

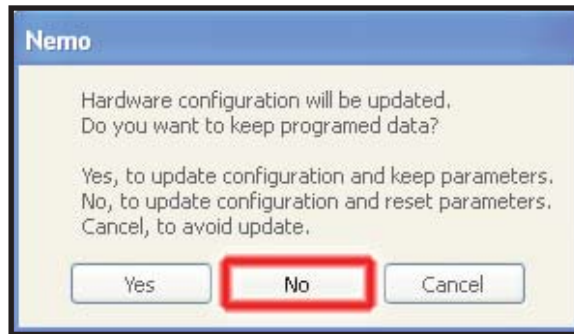


FIGURE 5

If a *Bluetooth*® key dongle is not connected to the Nemo, go to the step 6. Otherwise keep on as follows:

5
a

Tap on “YES” if you like to add a wireless Marposs wave device (see FIGURE 5a).

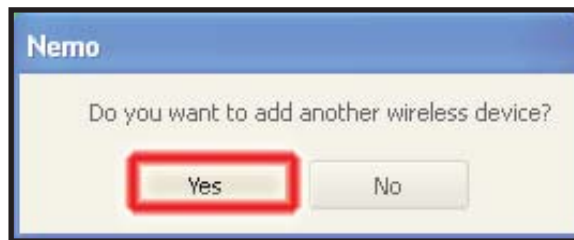


FIGURE 5a

After that, select the correct wireless Marposs wave device, setting all parameters required. When it's requested, perform the binding operation on the device selected.

Note: For more information about binding consult the Software Manual.

5
b

Wait few seconds to recognize the device (see FIGURE 5b). After that, the new device is ready to use.

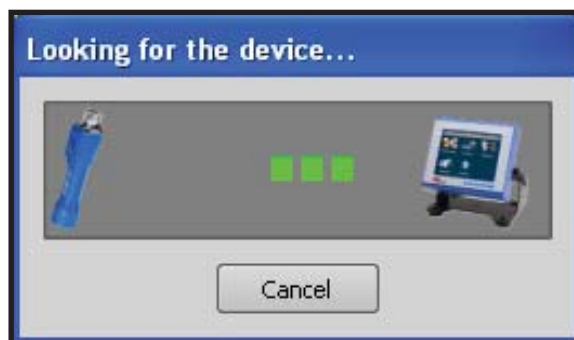


FIGURE 5b

6

After Nemo has automatically recognized the devices connected, it may be necessary to enable and connect the highlighted/selected transducer/sensor to device. Double tap on the red field or tap on the “EDIT” button (see FIGURE 6).

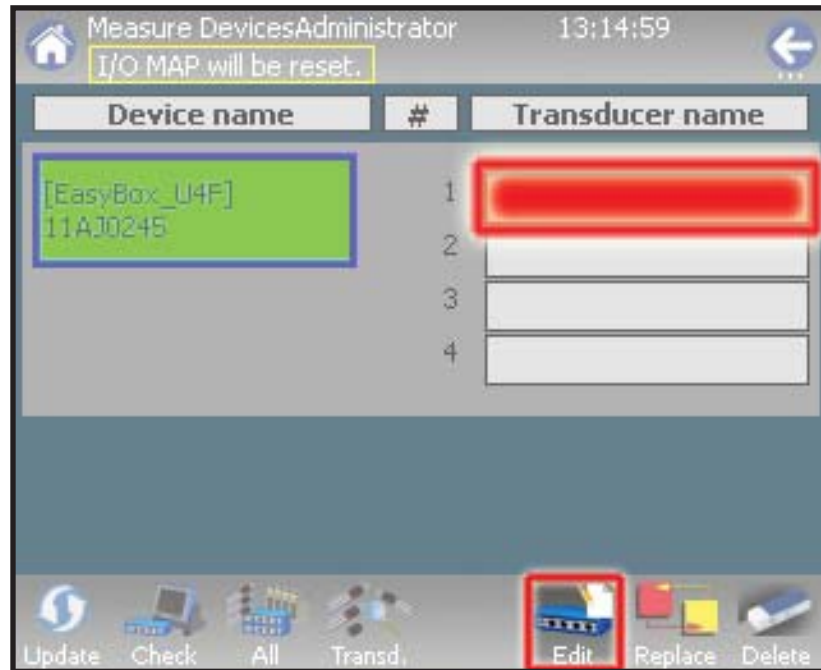


FIGURE 6

7

Select the transducer from the dropdown list and tap on “Ok”(see FIGURE 7).

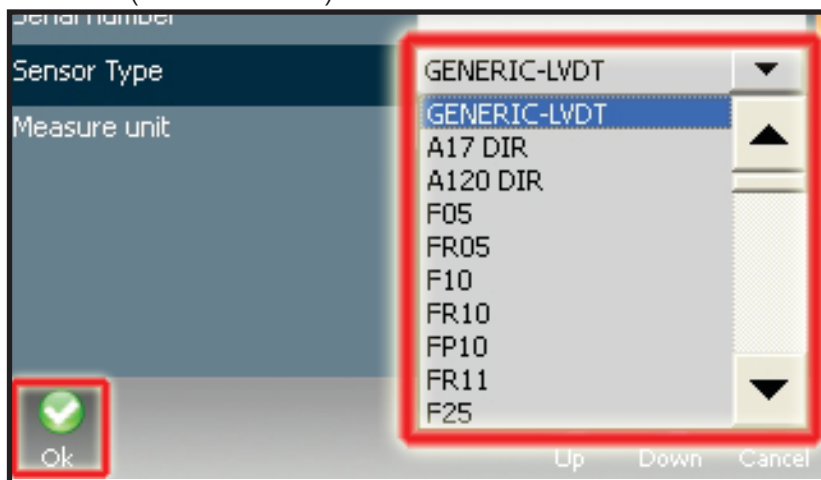


FIGURE 7

8

Tap on “TRANSD.” button to see the selected transducer’s current reading or sensor’s value (see FIGURE 8).

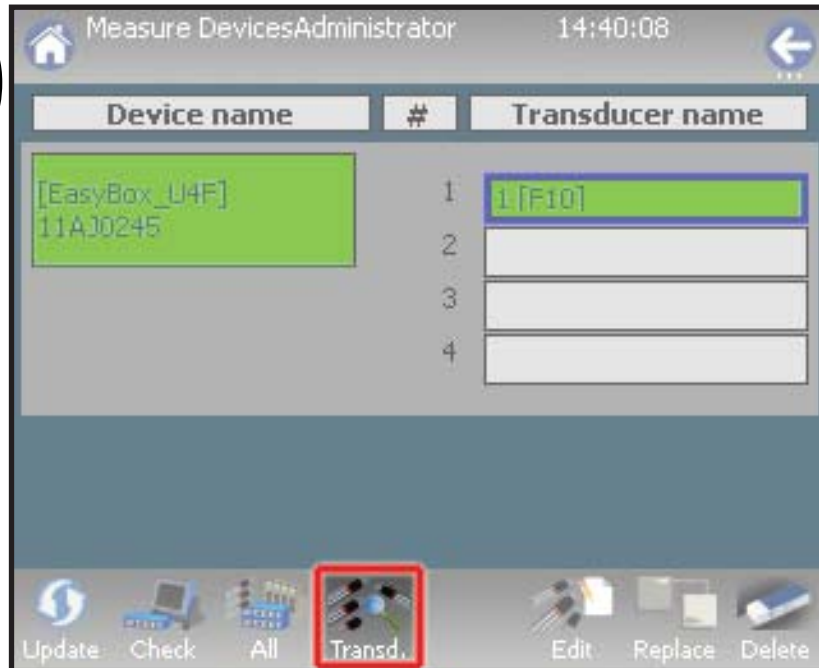


FIGURE 8

9

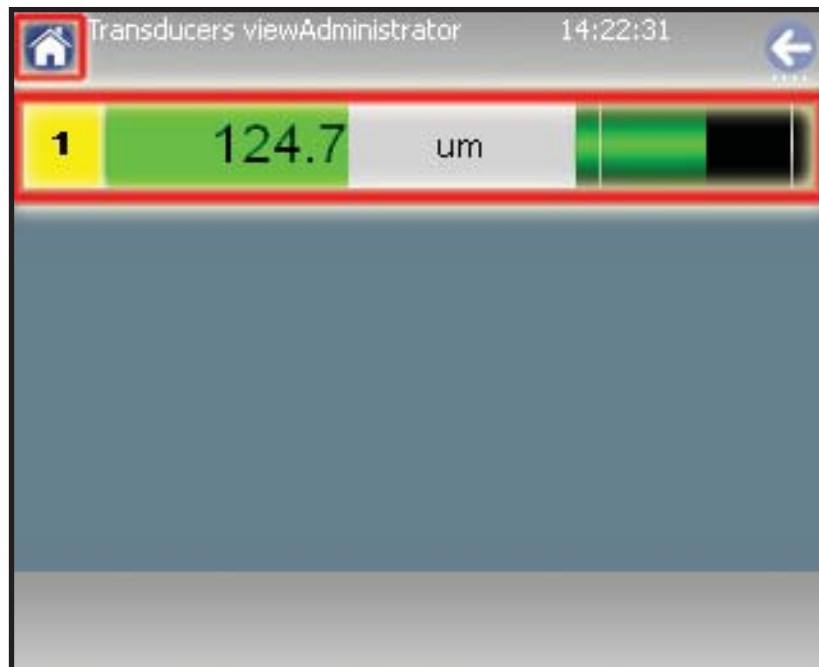


FIGURE 9

Tap on “HOME” button to return to the Home page.

3 PROGRAMMING

This chapter describes the operations sequence to program a measuring cycle.

1

From the Home page, tap on “PROGRAMMING” button (see FIGURE 1).

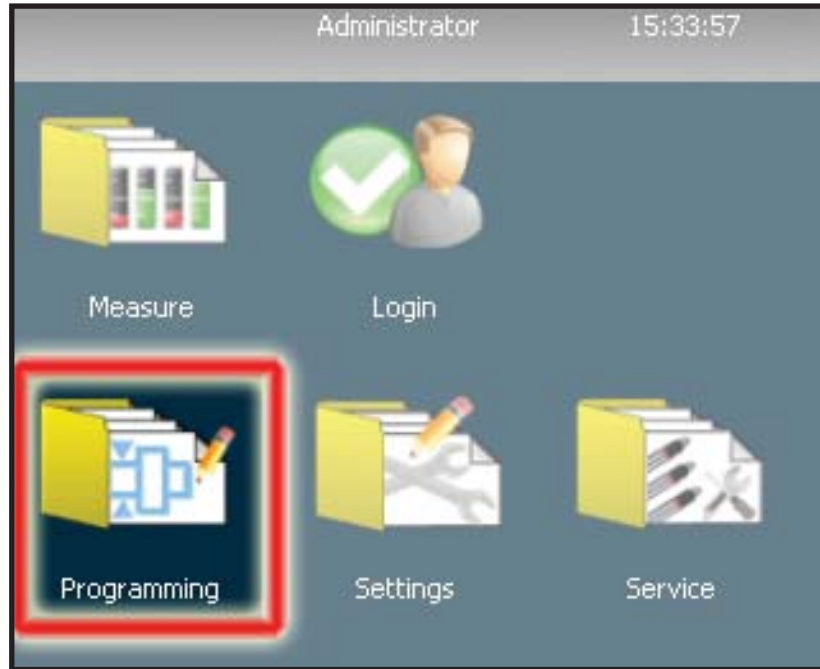


FIGURE 1

2

Tap on “PART PROGRAMS” button (see FIGURE 2).

Note: If you like to define a Master Set before a Part Program consult the Software Manual.

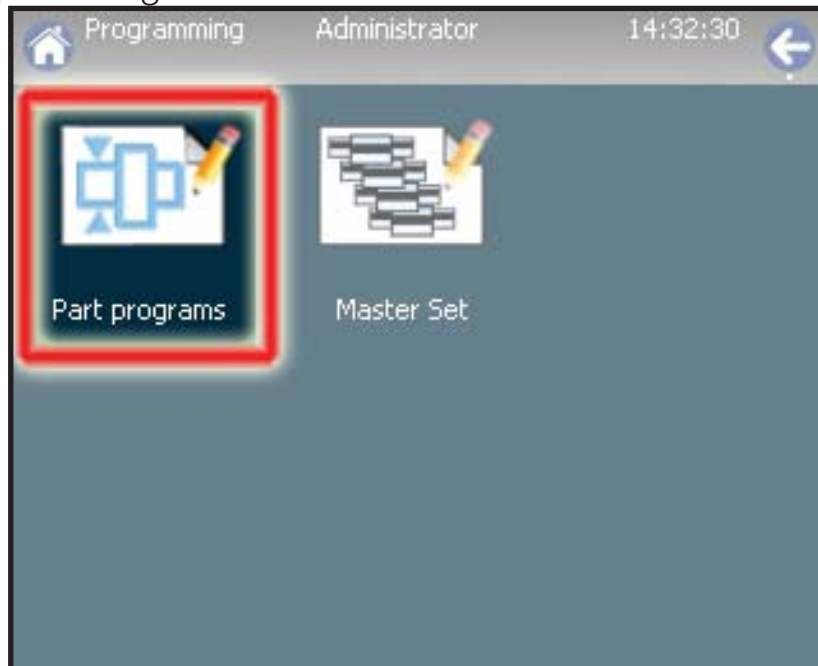


FIGURE 2



3

Tap on "New" button (see FIGURE 3).

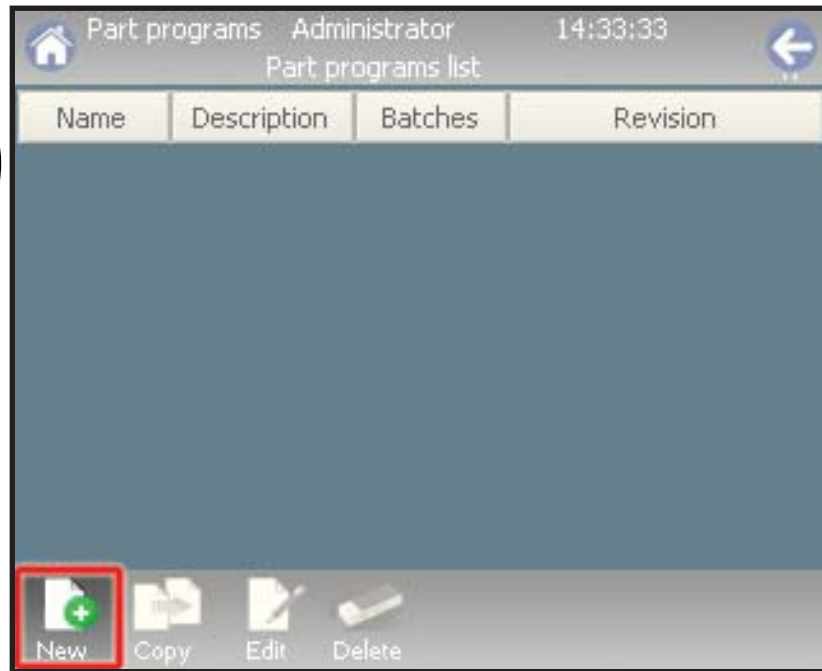


FIGURE 3

4

Tap on "Ok" button (see FIGURE 4).

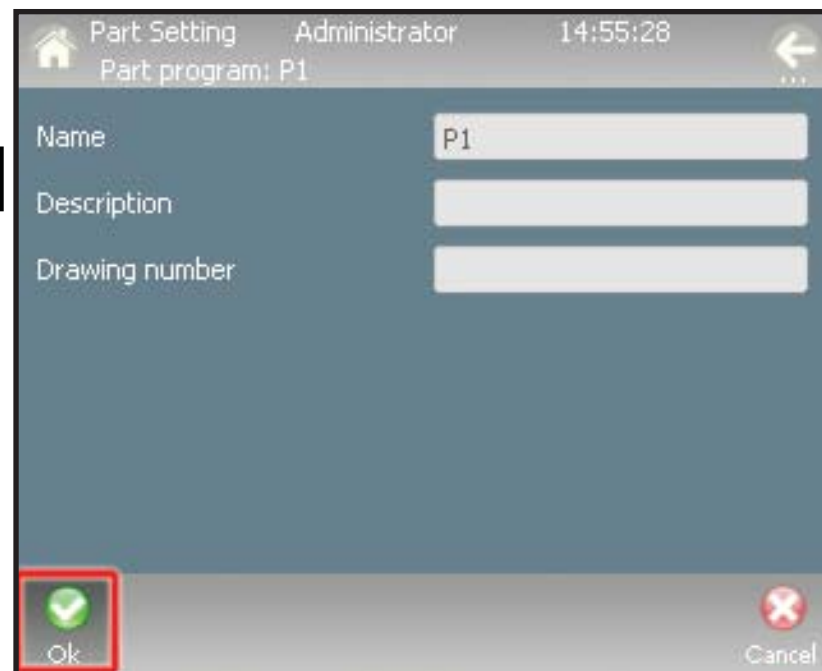


FIGURE 4

5

Tap on "Ok" button (see FIGURE 5).

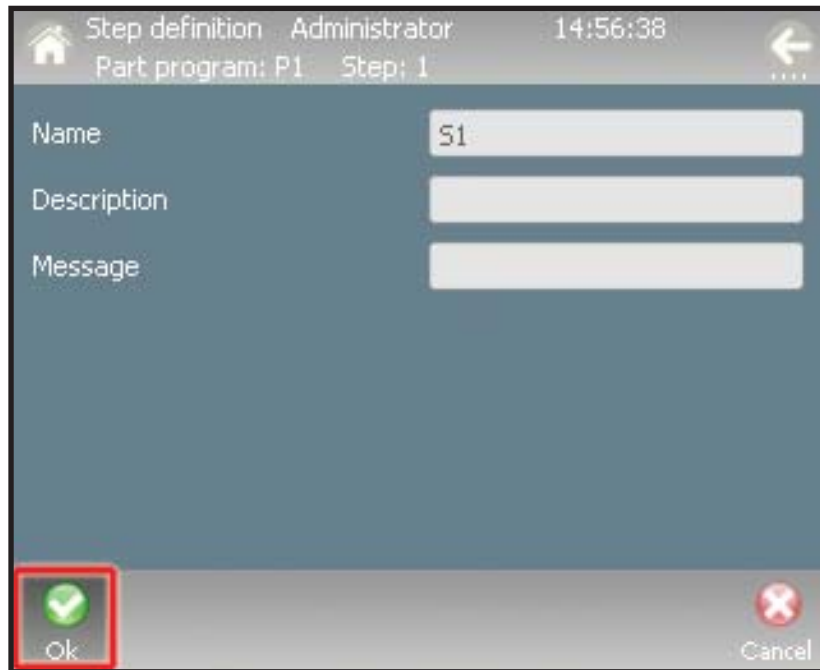


FIGURE 5

6

Double tap on the Formula field and write using the virtual keyboard the formula of the characteristic. Then tap on "Ok" button (see FIGURE 6).



FIGURE 6



7

You can now associate more than one characteristic to the part program, by tapping on “NEW” and repeating the entry shown in FIGURE 6 with a new characteristic. At the end of that operation tap on “Ok” (see FIGURE 7).

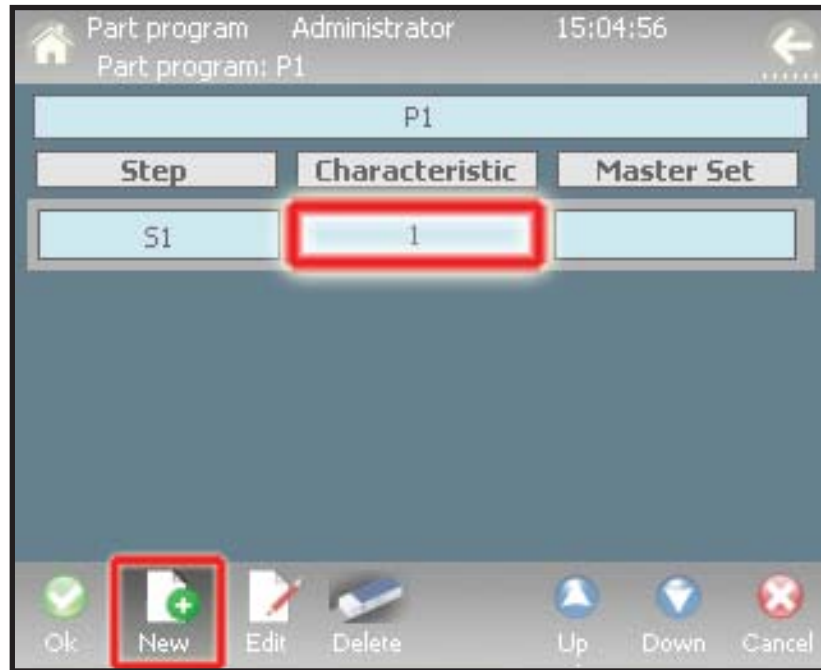


FIGURE 7

8

The new part is created (see FIGURE 8).

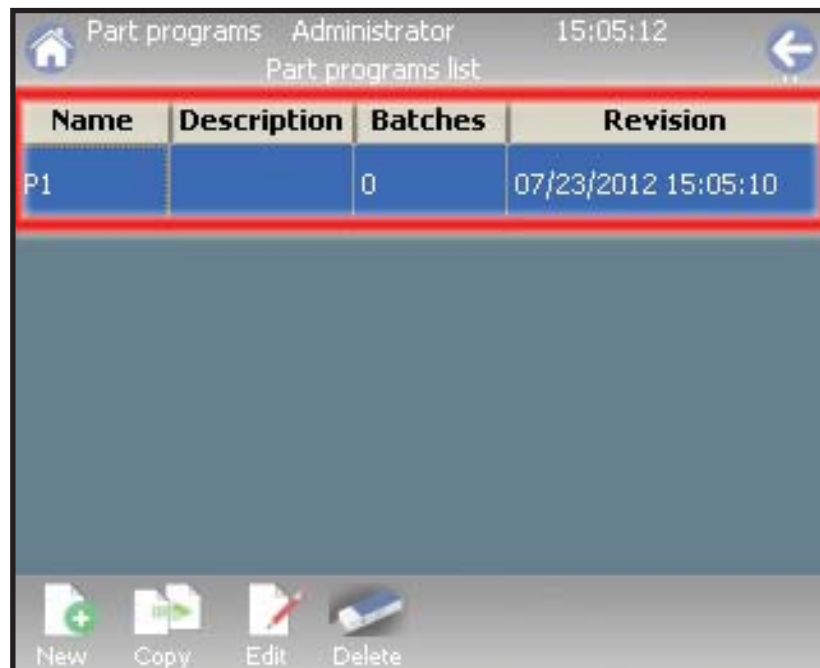


FIGURE 8

Tap on “HOME” button to return to the home page.

4 MEASURE

This chapter describes the operations sequence to execute and display the measurements.

1

From the home page, tap on “MEASURE” button (see FIGURE 1).

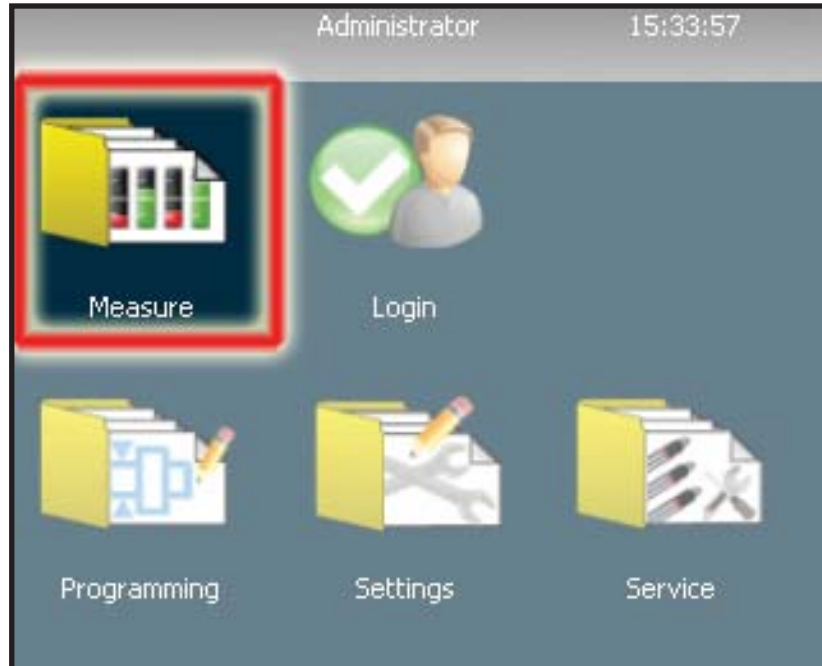


FIGURE 1

2

Tap on “BATCHES” button (see FIGURE 2).

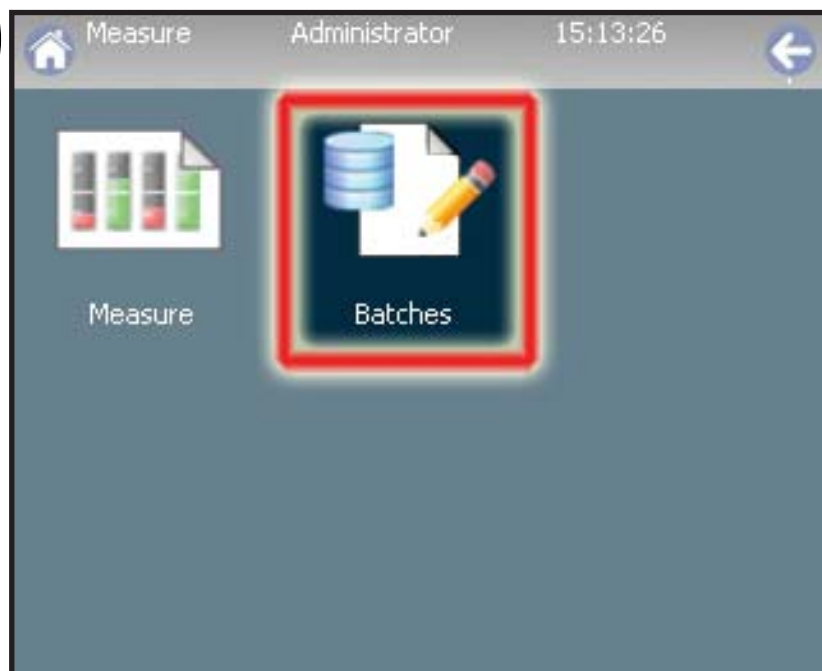


FIGURE 2

3

Tap on "ALL" button (see FIGURE 3).

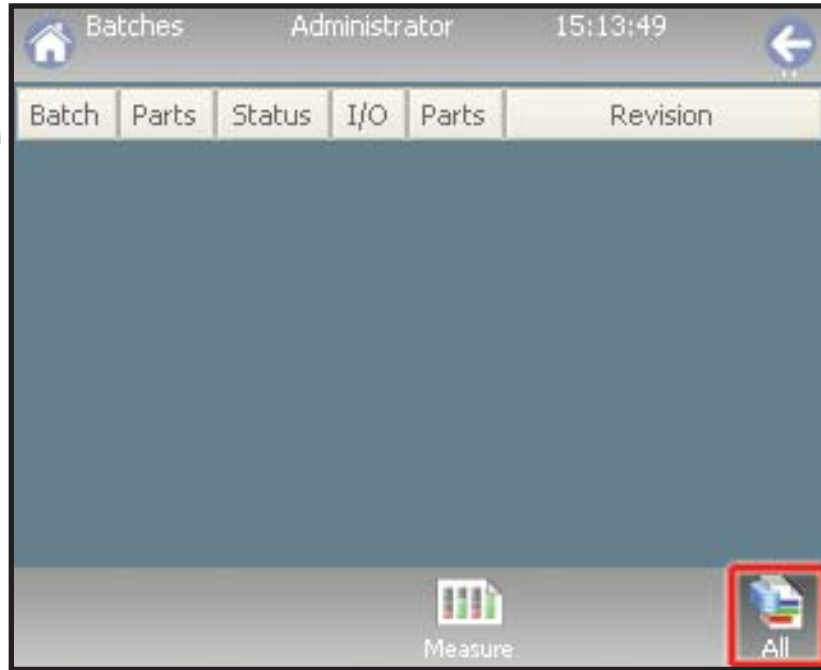


FIGURE 3

4

Tap on "New" button (see FIGURE 4).

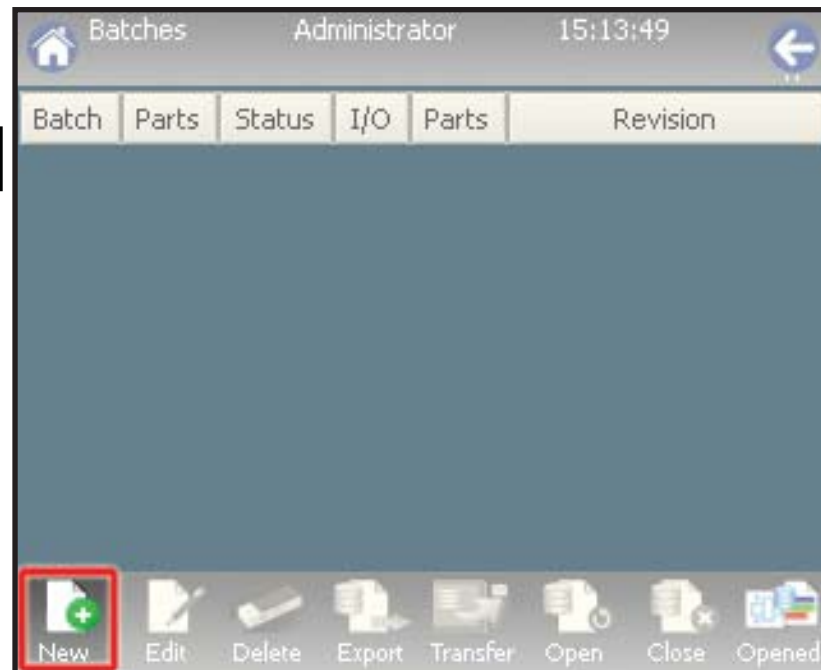


FIGURE 4

5

Select a part program and tap on “Ok” button (see FIGURE 5).

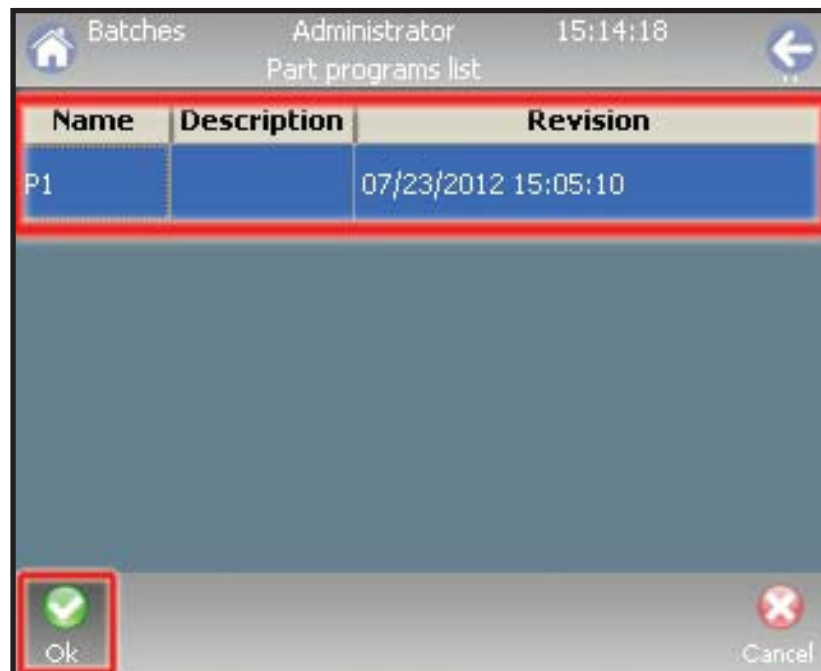


FIGURE 5

6

Enter the name of the batch and Tap on “Ok” button (see FIGURE 6).

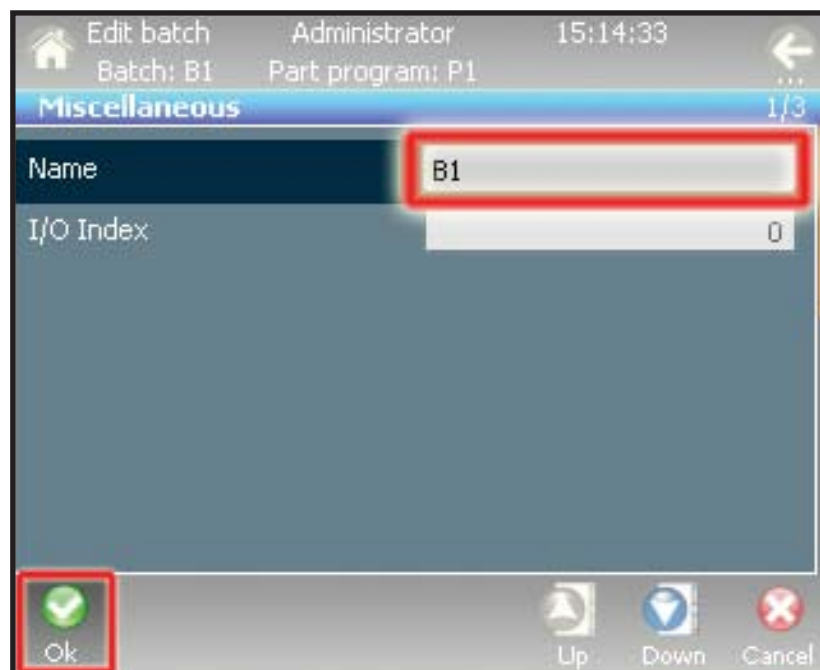


FIGURE 6

7

Tap on "MEASURE" button (see FIGURE 7).

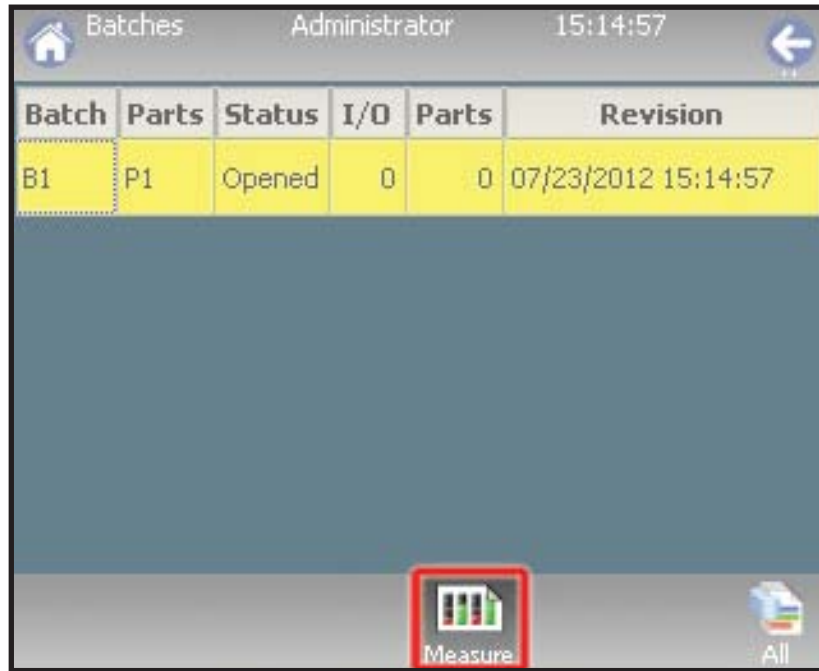


FIGURE 7

8

Tap on "START" button to begin the measure cycle (see FIGURE 8).

Note: If you like to perform a Zeroing before start measure consult the Software Manual.



FIGURE 8

9

Tap on “STOP” button at the end of the measure cycle (see FIGURE 9).

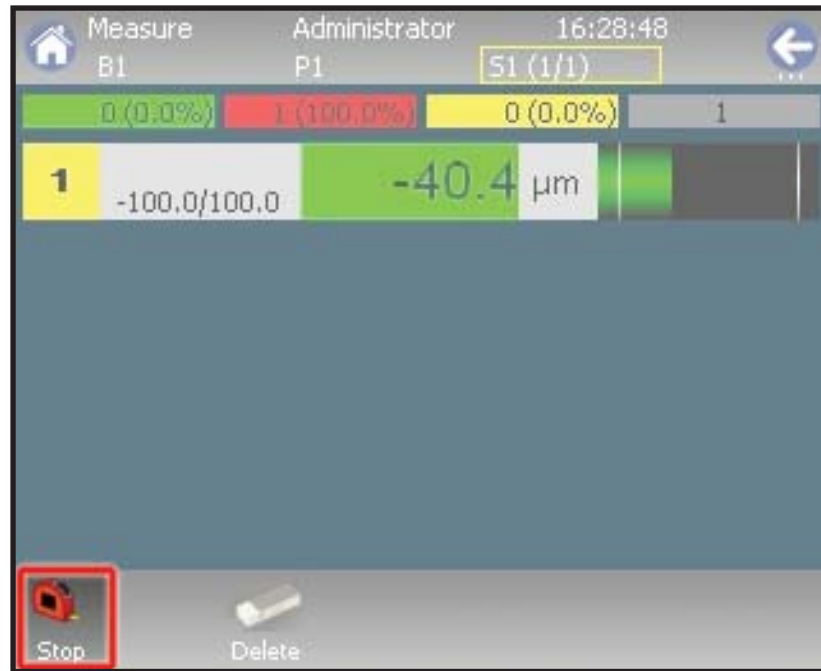


FIGURE 9

Tap on “HOME” button to return to the home page.



A full, up-to-date list of addresses is available at the official Marposs web site: www.marposs.com

DS0002G000 – Edition 07/2013 – Details may change without prior notice.

© Copyright 2013 MARPOSS S.p.A. (Italy) – All rights reserved.

MARPOSS, and other names/signs relative to Marposs products, referred to or shown in this document are registered trade marks or trade marks of Marposs in the United States and in other countries.

Any third party rights relating to trade marks or registered trade marks referred to in this document are recognised for the respective holders.

Marposs has an integrated Company Management system for quality, the environment and safety, with the following certification: ISO 9001, ISO 14001, OHSAS 18001 and QS9000 T&E. Marposs has also been awarded EAQF 94 and the Q1-Award.